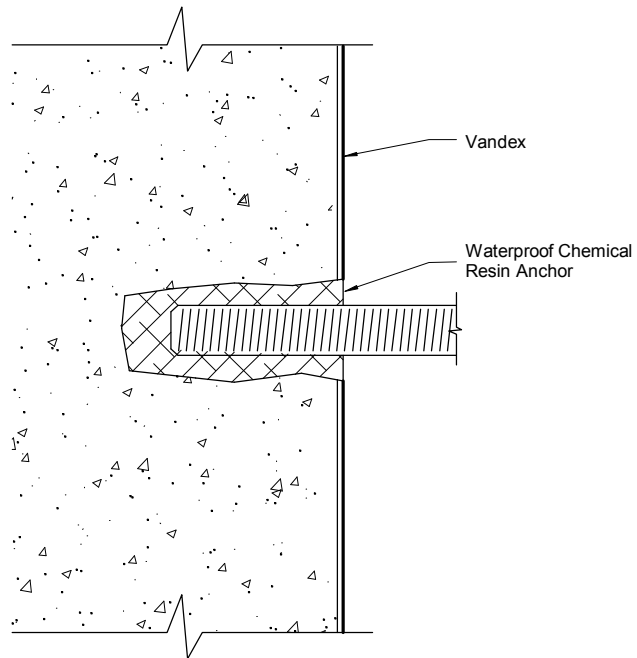


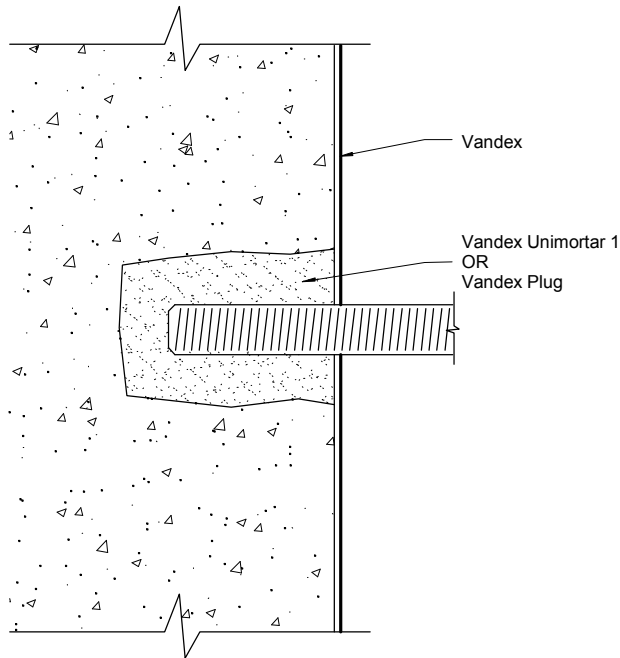
THIS DRAWING IS THE PROPERTY
OF SAFEGUARD AND MUST
NOT BE LOANED OR COPIED
WITHOUT WRITTEN CONSENT

© 2009 SAFEGUARD EUROPE LTD



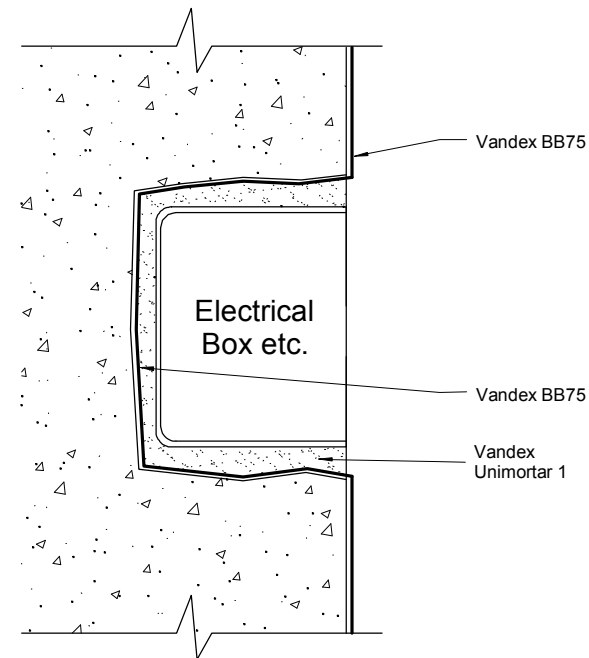
Option 1

Fill fixing hole with Waterproof
Chemical Resin Anchor



Option 2

Drill fixing hole oversize & fill with Vandex Unimortar 1.
Fix into Unimortar 1 or Vandex Plug and reinstate
surface waterproofing on top of Unimortar 1.



Option 3

Line inside of chase or pocket with
surface waterproofing and fix box into mortar

NOTES: All SAFEGUARD CAD drawings show typical applications and our Technical Department should be consulted before they are used for specification purposes.
Product applicators should refer to the manufacturer's application/installation guidelines.
Where ever possible avoid fixing through the Vandex waterproofing layer.
It is essential to maintain the integrity/continuity of the waterproofing.

System Drg. Nos: VAND-019(1).tcw (TurboCAD)
VAND-019(1).dwg (Autocad)
VAND-019(1).pdf (Acrobat)

CONTRACT No:

DRAWN JDF, CBS

DATE 31st July 2009

SCALE (A3) Not To Scale

CHECKED

APPROVED

CLIENT:-
Safeguard Europe Ltd.

TITLE:
Options for Fixing Through
Vandex



DRG. No.
VAND-019

REV
1

MOD. BY	DATE	CHK. BY	APP. BY	MOD. BY	DATE	CHK. BY	APP. BY	MOD. BY	DATE	CHK. BY	APP. BY