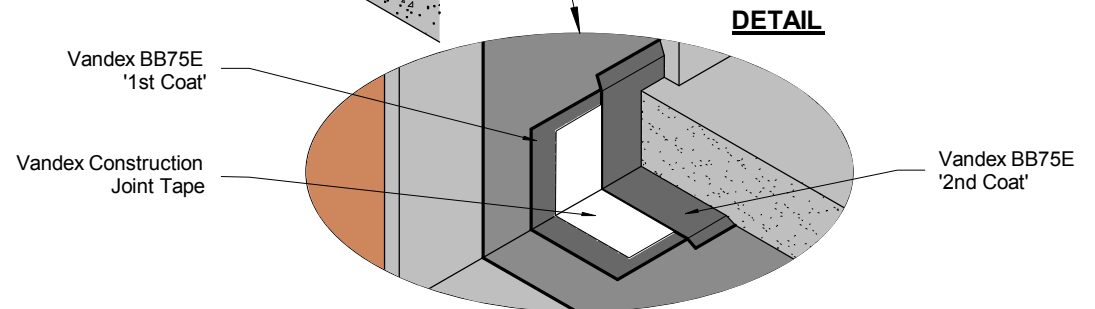
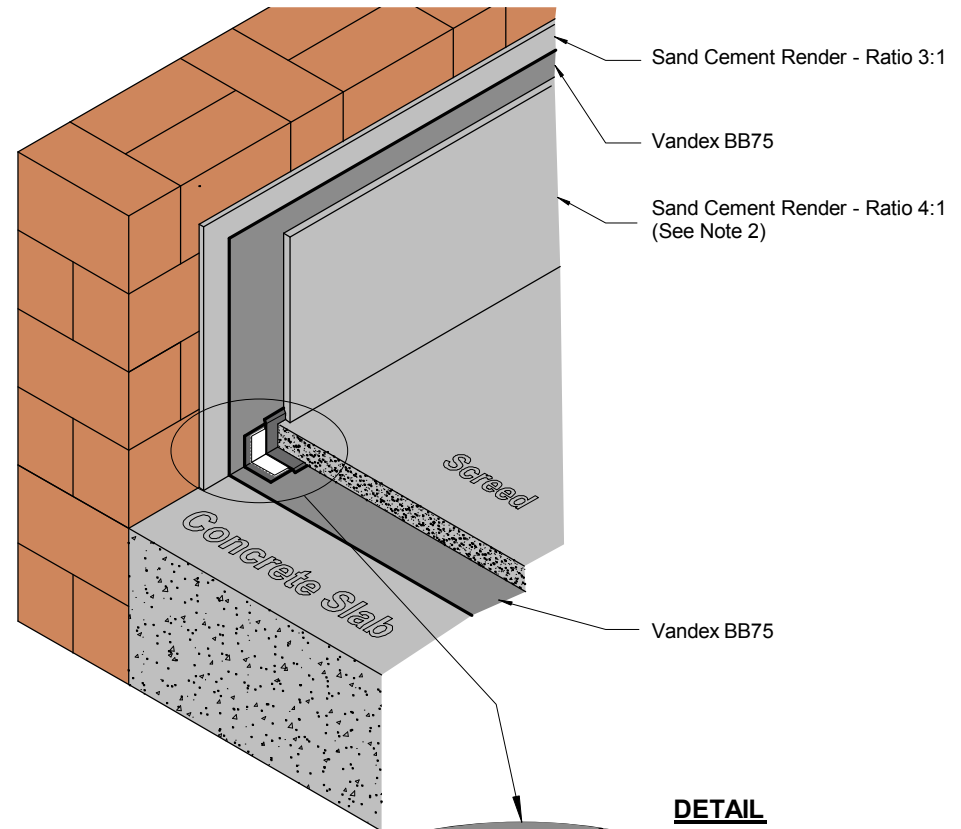
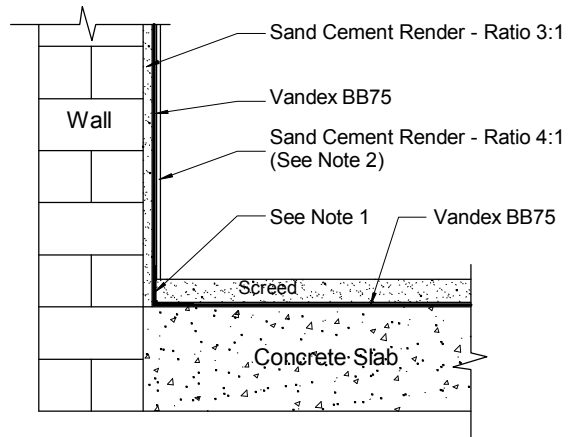



THIS DRAWING IS THE PROPERTY OF SAFEGUARD AND MUST NOT BE LOANED OR COPIED WITHOUT WRITTEN CONSENT

© 2006 SAFEGUARD EUROPE LTD



**NOTES:**

- 1 2 Coats of 100mm x 100mm x 2.5mm Vandex BB75E reinforced using Vandex Construction Joint Tape (See - 'DETAIL')
- 2 4:1 render, 1:1:6 lime plaster or cementitious renovating plaster

NOTES:												System Drg. Nos:		VAND-005(3).tcw (TurboCAD) VAND-005(3).dwg (Autocad) VAND-005(3).pdf (Acrobat)		CLIENT:- Safeguard Europe Ltd.			
												CONTRACT No:				TITLE:			
DRAWN		JDF, CBS		DATE		16th March 2005		Wall/Floor Junction Details Using Vandex Waterproofing System		DRG. No. VAND-005		REV 3							
SCALE (A3)		Not To Scale		CHECKED															
APPROVED																			
MOD. BY	DATE	CHK. BY	APP. BY	MOD. BY	DATE	CHK. BY	APP. BY	MOD. BY	DATE	CHK. BY	APP. BY								
JDF, CBS	24/02/06																		